



Onslow Gardens
SOUTH KENSINGTON, SW7



This charming two-bedroom apartment on Onslow Gardens enjoys wonderful views over the communal garden square and is filled with natural light throughout.



The property features a modern open-plan kitchen and reception room with high ceilings, three large sash windows, and an attractive fireplace, creating a bright and welcoming living space. The kitchen is fully integrated and thoughtfully designed for modern living.

The principal bedroom benefits from excellent built-in storage and comfortably accommodates a king-size bed. The second bedroom, positioned to the rear of the apartment, includes a double bed, ample storage, and a walk-in storage cupboard.

A generous private terrace provides an ideal space for entertaining, with pretty views over the local church and surrounding mews. The apartment also offers a well-proportioned family bathroom with a rainfall shower, along with a separate guest WC.

Decorated beautifully, the property has a calm and tranquil feel throughout. Parquet flooring runs across the apartment, and there is the added convenience of direct lift access.

Prospective tenants should note that administration fees may be applicable. Please contact us for further details regarding these charges.

- A two bedroom lateral apartment
- Beautifully furnished
- Roof terrace with views over the mews
- Direct lift access
- Open plan kitchen/reception room
- 0.4 miles to South Kensington station







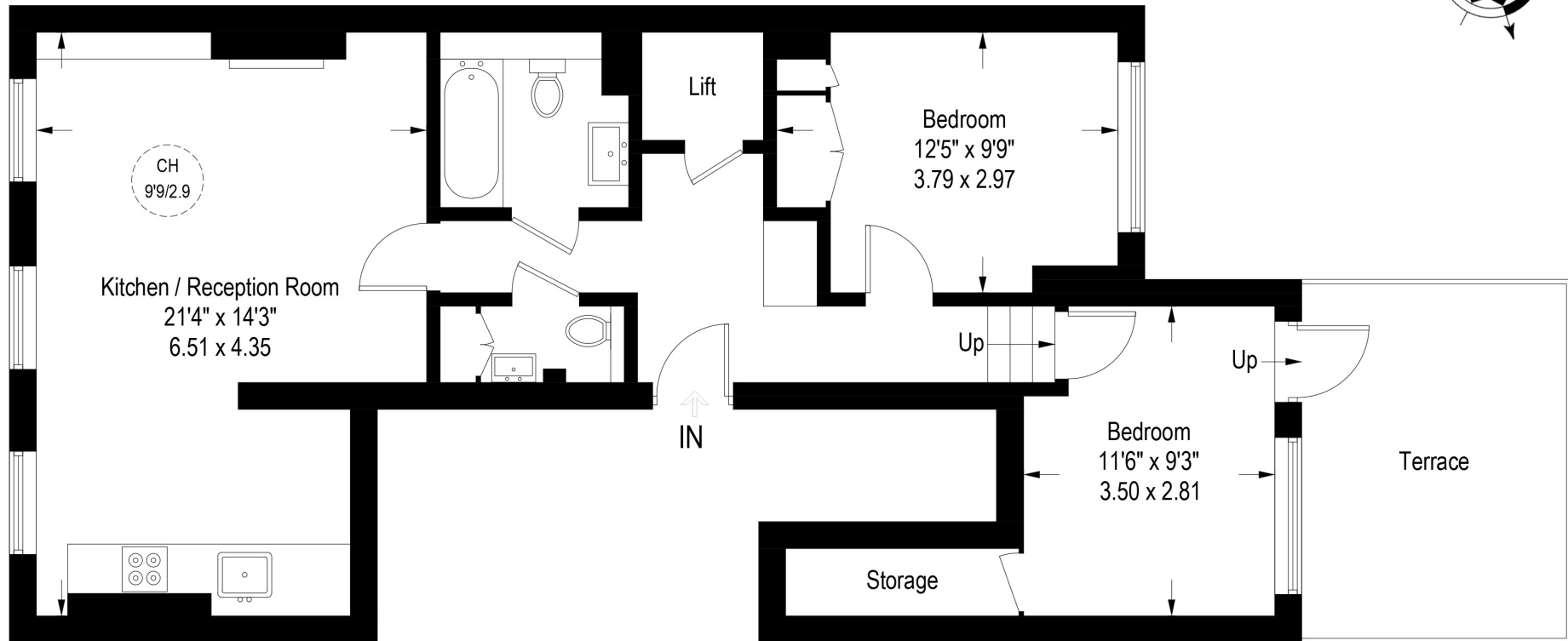
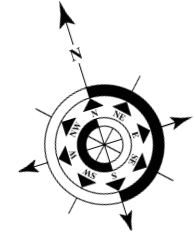
Approx. Gross Internal Area 772 Sq Ft / 67.1 Sq M

Price: £1,225 Per Week

(£5,309 PCM)

Furnished

EPC: C



Second Floor

Maskells

71 Walton Street

SW3 2HT

0207 581 2216

lettings@maskells.com